



SAWTM

science art writing

A Cross-disciplinary approach



Some people are already
on the 'science bus'!
Supporters and
opposers..



How about everyone else?!

The SAW Trust

- Self-funding registered charity based at JIC, founded in 2006
- Our aim is to bring science (and scientists) into everyday lives and develop new ways of stimulating creativity, exploration and learning

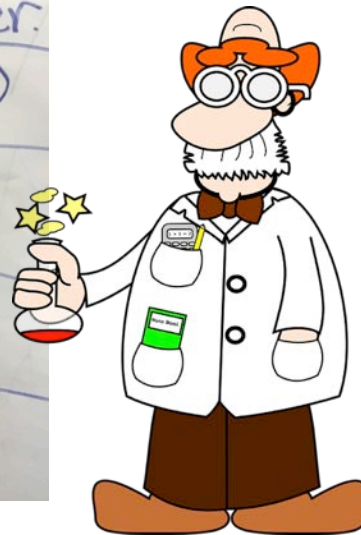


SAW's founder, scientist
Professor Anne Osbourn FRS
from the John Innes Centre

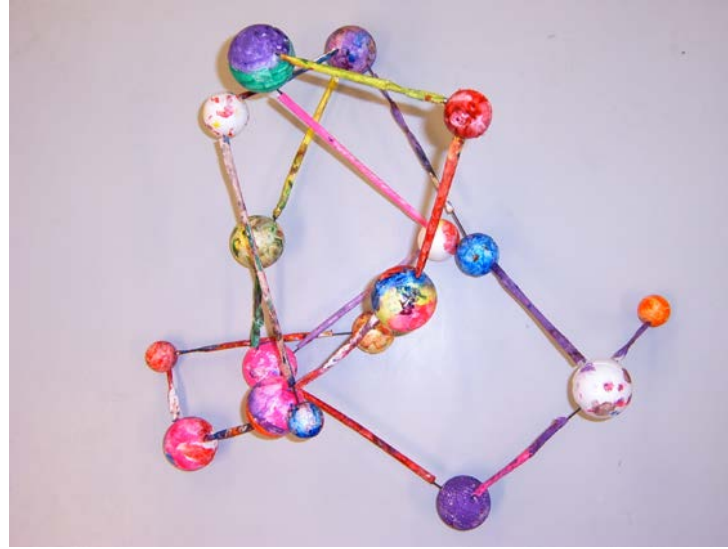
!de magnets. magnets on doors.

(SAW)

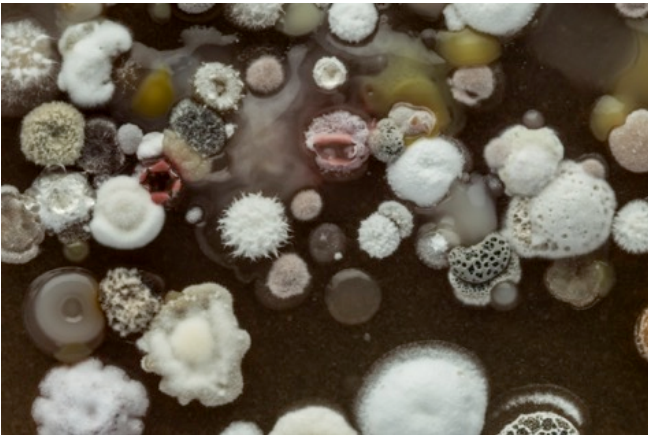
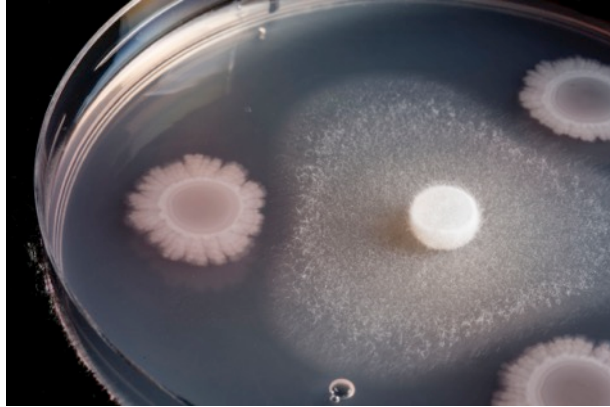
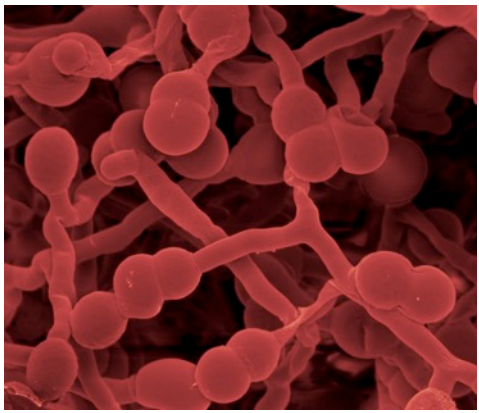
	Scientist	Artist	Writer
SAMI	0	14	10
MIKE	4	12	11
CHRIS	26	1	0
JENNI	4	15	9



Real research topics in the classroom



A SAW Day: Science



Poetry



JADEN age 10

Bacteria hotel
Annoying but helpful
Colonies
Threatened by bacteriophage
Exceptionally life-saving
Resting in our own bodies
Important
A very useful thing

THALES KEYSER age 11

Invasion of the plague

The first body of the victim fell to the floor.
Invading the next,
Unleashing a wave of unstoppable minions,
Tirelessly attacking,
Infinitely resisting.
Too tiny to see,
Too much pain to handle

The feel of fright.
Occupying the first cell,
Changing its will,
Cloning itself,
Sending an inferno at the body's defenses,
Too tiny to see,
No trace of goodness.

With one destiny,
Only one desire,
Growing infinitely,
Taking more lives,
Outrageously sucking life gone.
Too tiny to see,
Do panic.
They're coming.

The body's defences are weakened.
Its might grows,
Destroying the last,
Striking down the heart,
Its body fell to the floor.
The job is done.
They're moving on.



Art



Numbers



5,000

Primary school children taught
science through SAW



225

Teachers trained in SAW
methodology



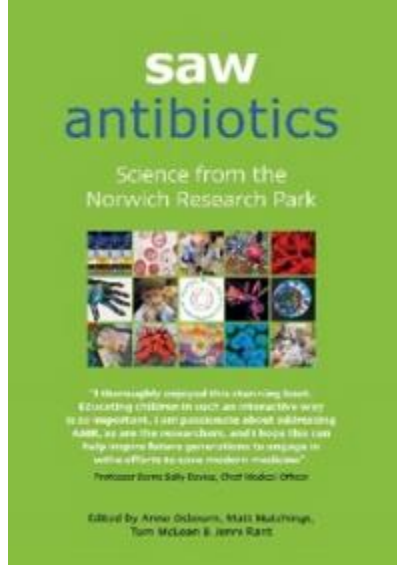
>500

Early career/established
scientists delivered SAW
activities



SAW books in 2
languages

Antibiotics Projects



"I thoroughly enjoyed this stunning book. Educating children in such an interactive way is so important. I am passionate about addressing AMR, as are the researchers, and I hope this can help inspire future generations to engage in the efforts to save modern medicine".

Prof. Dame Sally Davies, Chief Medical Officer





Public Events

We have been taking stands to Latitude Festival for the last 4 years and now run the science tent.



My little boy went to the science tent at the latitude festival and had THE BEST time ever! I wanted to reach out to all the science PHD students and lecturers who worked so hard to make this the best best best experience for him.



Working with communities

Working with Prof Neil Cooper from the School of Psychology, UEA, we invited the public to explore their sense of self and create books to share.



**Engaging
Libraries**
public engagement
on health and wellbeing



CarnegieUK
TRUST
CHANGING MINDS • CHANGING LIVES



Guardians of the Gut



Our purpose-built website for schools with quizzes, videos and resources for the classroom has a continual data collection platform developed with a child psychologist to capture usage and measure impact.



We built a giant, interactive walk-through gut with game stations for people to learn all about their gut microbes and how they grow and change with us as we age.



OpenPlant - JIC, EI & University of Cambridge

Global Garden Workshop



WISB
WARWICK INTEGRATIVE
SYNTHETIC BIOLOGY CENTRE

DNA Dave – Educational Robot



Engineering and
Physical Sciences
Research Council



Biotechnology and
Biological Sciences
Research Council



OpenPlant

SAW
science art writing

Creating Resources



All the Buzz lesson pack includes;

- science based lesson plan and slides with guidance notes for teachers
- educational bee-themed board game
- colony lifecycle challenge
- Animated video created by children



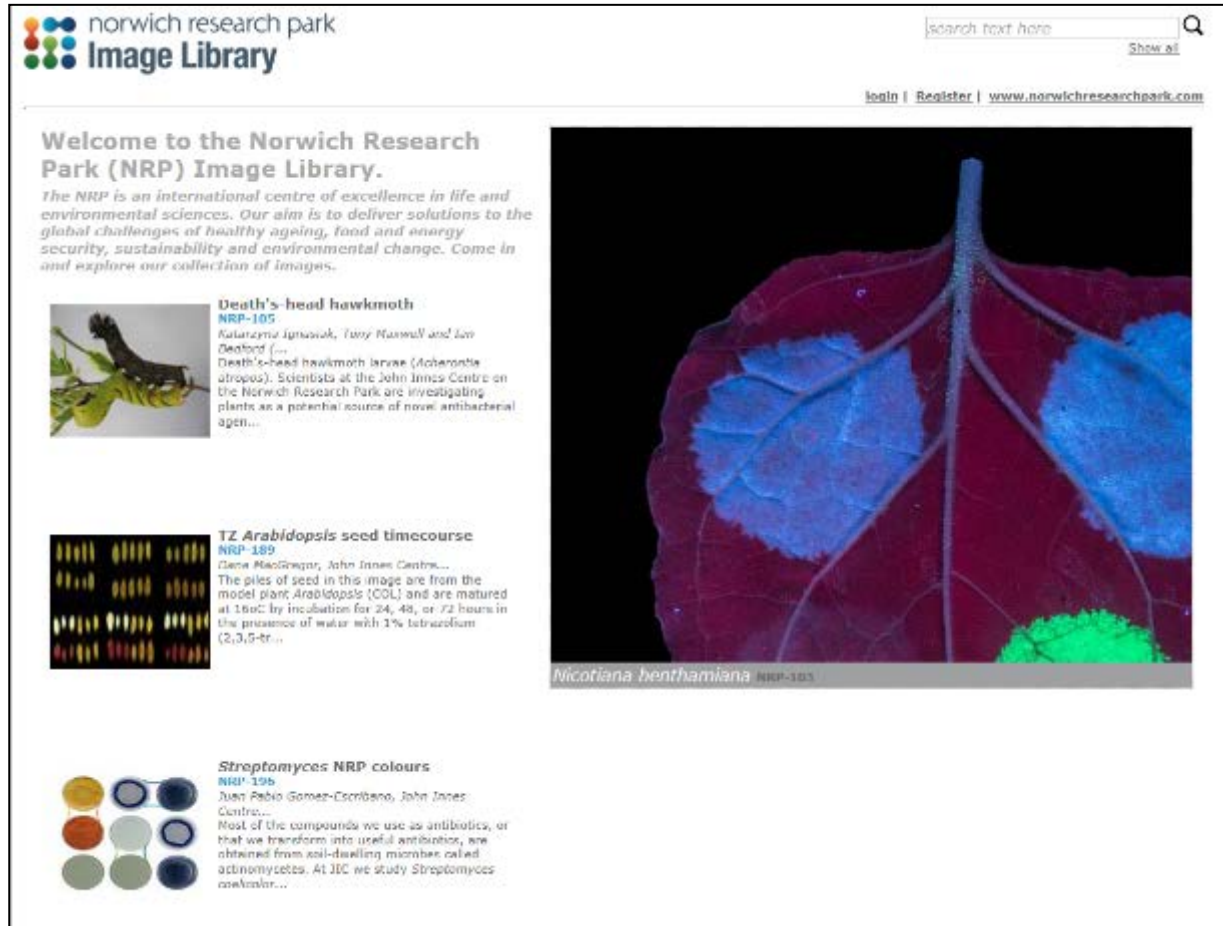
Conscious Consumers is a new project for teenagers that focuses on topical issues. The first topics are plant-based diets, personalised nutrition and food miles. We are planning to cover rewilding and climate change next!



I have started to think more about what I eat and where it comes from and am more conscious of my food miles (14 year old)

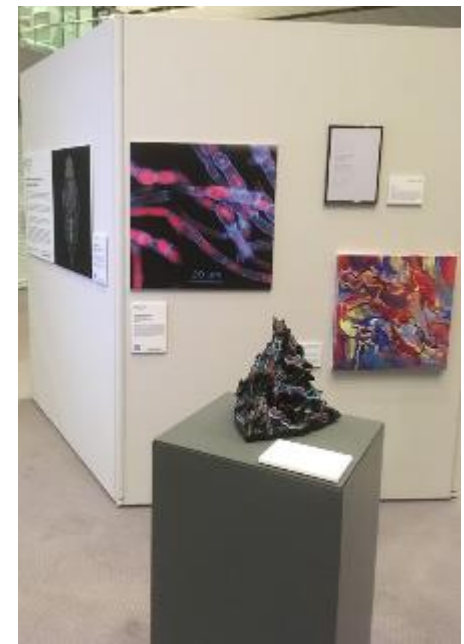


Images provide the starting point

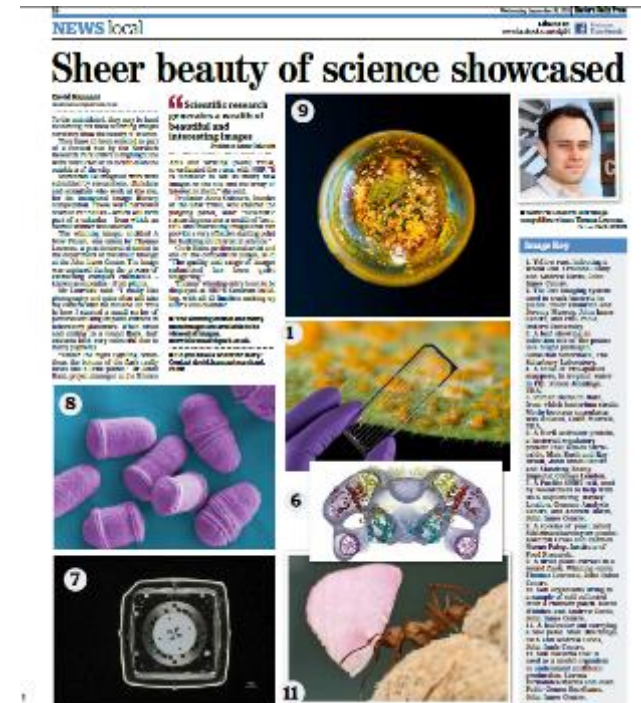


NRP Image Library:

<http://images.norwichresearchpark.ac.uk>



Art & poetry
exhibition at
SCVA 2019



sawTM
science art writing

Example intern Projects – depending on date!

Summer Science Challenge Book



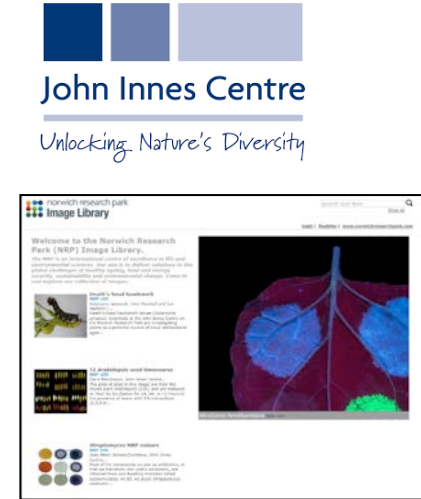
Climate change
SAW activities &
development of
primary school
conference with
Norwich Science
Festival



Climate change &
rewilding topics



Social media
partnership
project with JIC
to build NRP
image library



Edible East sci-art trail project



Building digital
hub for FFDT



DNA Dave video
tutorials & website



ABOUT SAW IN SCHOOLS NEWS OUT AND ABOUT WORLDWIDE GET INVOLVED BUY THE BOOKS

The *science, art and writing* initiative breaks down traditional barriers between the arts and sciences.



www.sawtrust.org

jenni.rant@jic.ac.uk

 @SAWTrust

Get in touch if you would like to work with us!



SaWTM

science art writing